

Setting the Ethernet Converter IP Address

Introduction

The standard 3 wire serial interface is used to setup the converter to meet the user's requirements. The parameters to be used for this interface are:

- Baud Rate - 19200
- Parity - None,
- Data bits - 8,
- Stop bits – 1,
- Flow control – None.

Using any data terminal emulation program, such as Hyper-terminal (standard with Windows) or Telix, you can view and edit the converter parameters.

Setting the IP Address using Hyper-Terminal

To configure the Ethernet Converter using Hyper-Terminal, proceed as follows:

1. Start the program from the Windows **START/ PROGRAM/ ACCESSORIES/ COMMUNICATIONS/ HYPER TERMINAL** menu option.

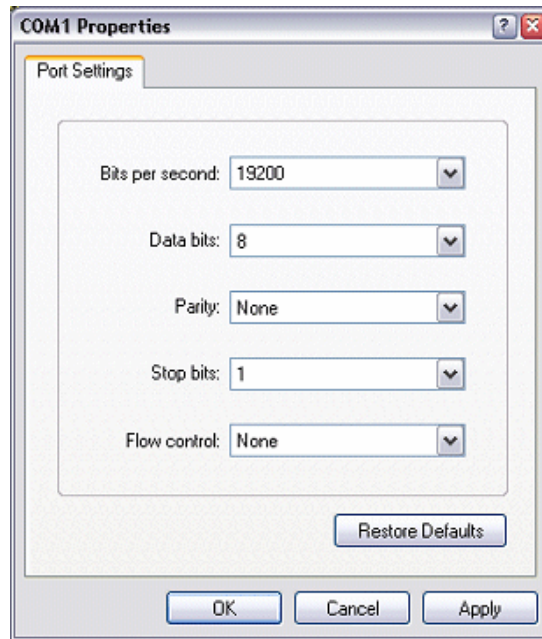


2. Type in an appropriate name for the new connection, i.e. TNAJBox. Select the **OK** button.

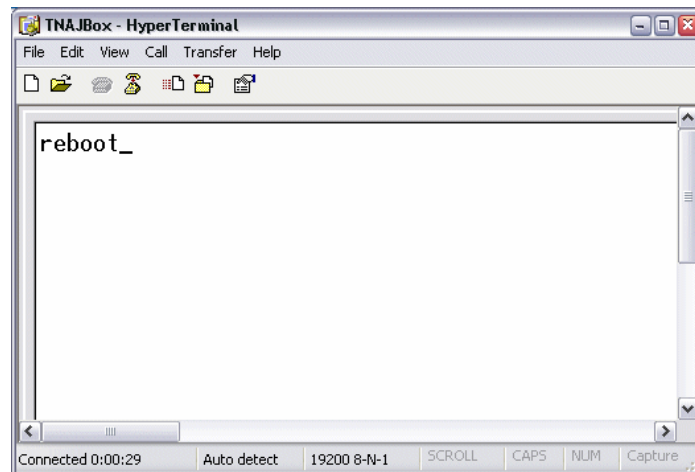


3. Use the Connect using select box and select an available serial Comm's port and then click on the **OK** button.

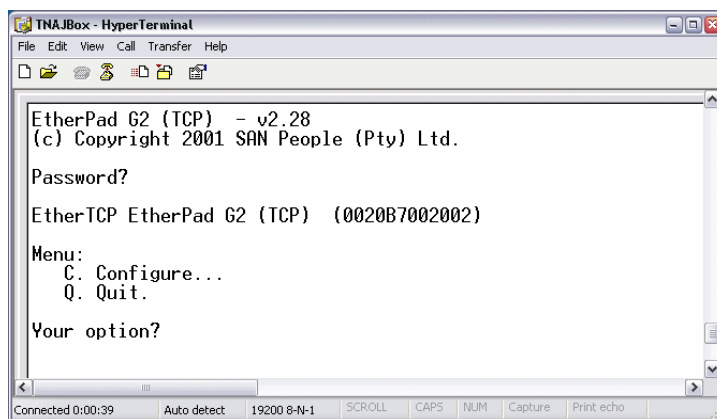
4. Enter the port settings as illustrated below. Note that the Configuration Port is set to a transmission speed of 19200 Bits per second.



5. Click on **OK**. When the Terminal Session connects, type in **Reboot** and press the keyboard **[Enter]** key.

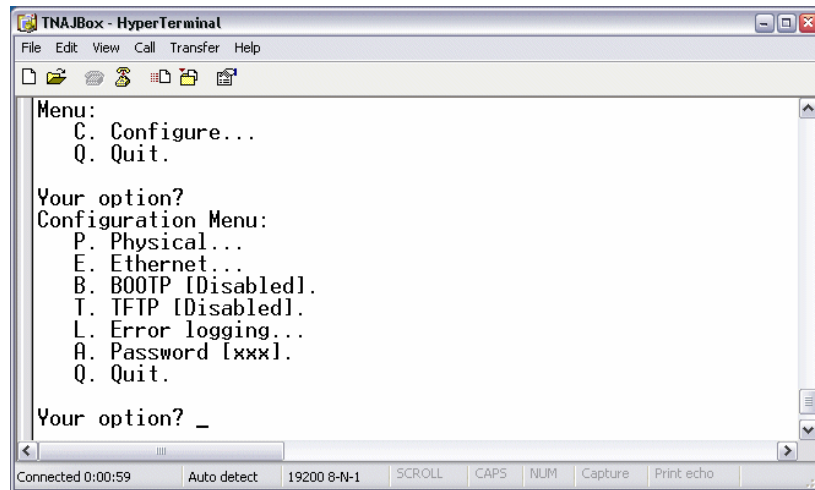


6. The EtherPAD will now reboot. At the **Password** prompt, type in **xxx**.

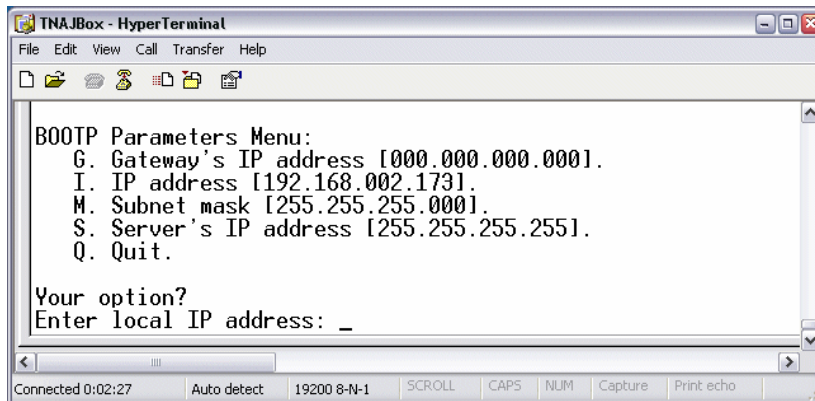


Note: The current firmware version will also be displayed.

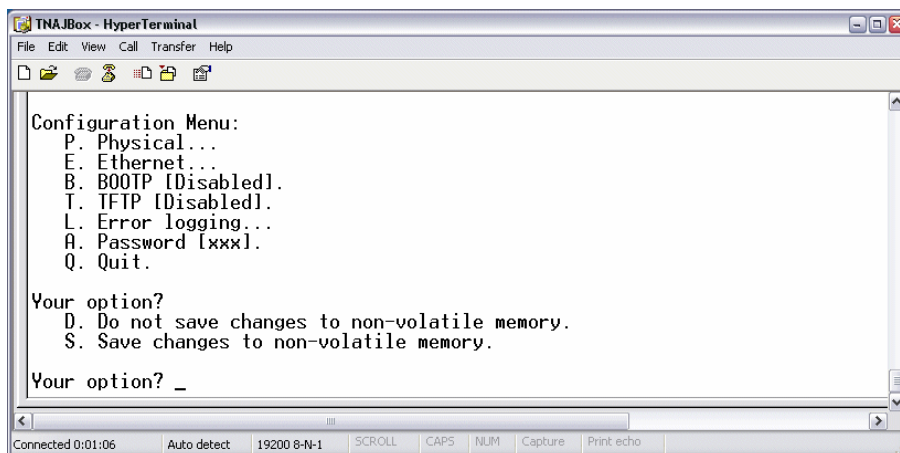
7. Press the keyboard **[C]** key to configure the TCP/IP module.



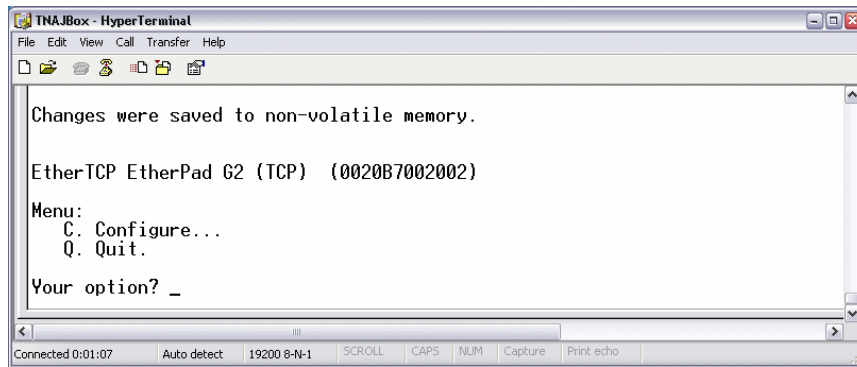
8. At the **Your option?** prompt, press the **[B]** key twice.



9. When the BOOTP Parameters Menu is displayed, press the **[I]** keyboard “hot-key”.
Note: The above addresses are only examples and they must be set according to your specific network.
10. At the prompt, type in the required IP address as follows:
- The first set of 3 numbers and then press the **[Enter]** key,
 - The second set of 3 numbers and then press the **[Enter]** key.
 - The third set of 3 numbers and then press the **[Enter]** key.
 - The last set of 3 numbers and then press the **[Enter]** key.
11. Press the **[Q]** key to return to the Configuration Menu.
12. Once all the parameters have been configured correctly, press the **[Q]** key and the following will be displayed.



13. Press the **[S]** key to save the parameters. Once saved, the following will be displayed.



14. Pressing the **[Q]** key at this stage will reboot the device and enable the saved settings.

Note: Wait approximately 15 to 20 seconds after the device has rebooted before attempting to establish a TCP/IP connection.